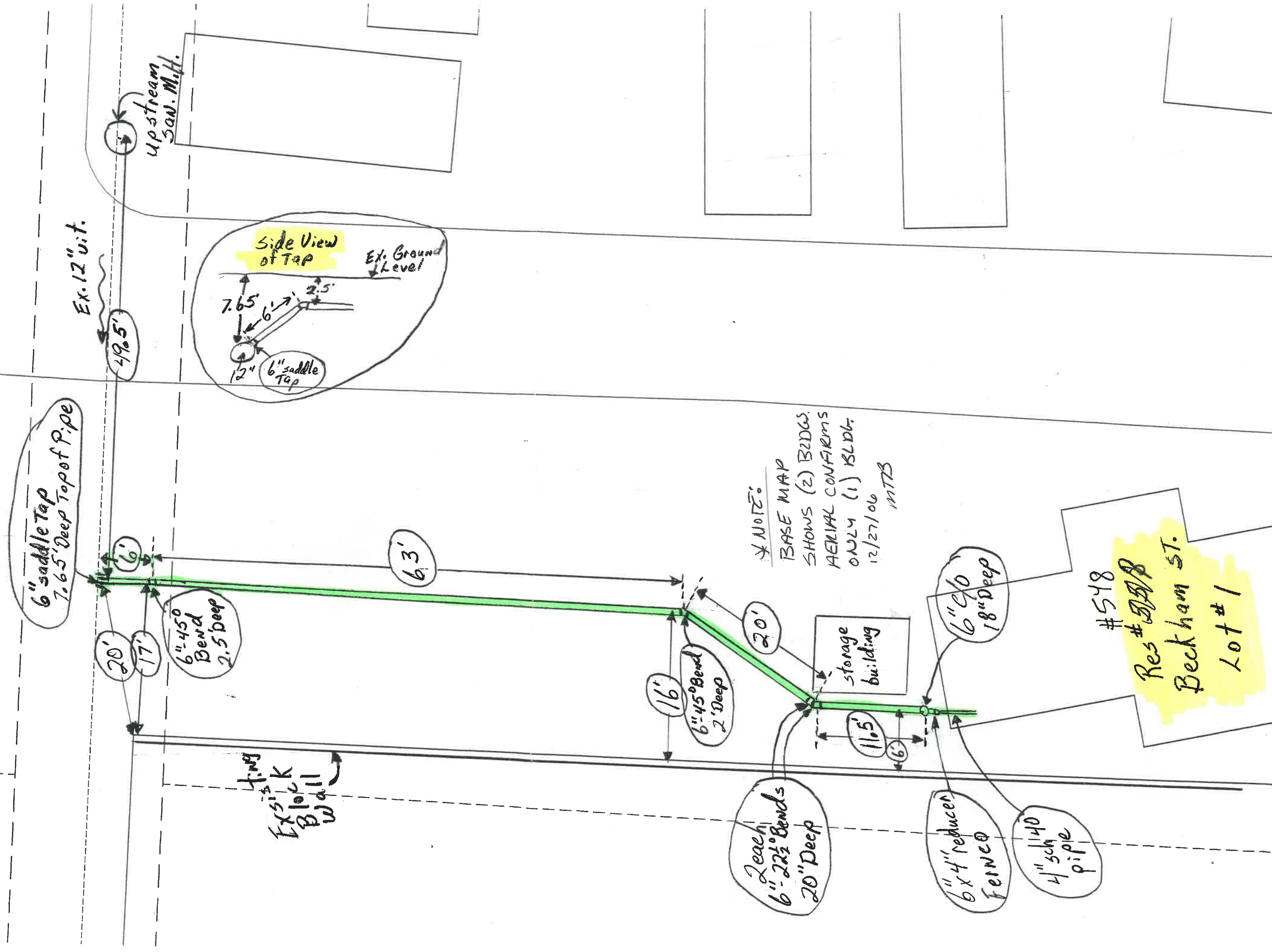


Date Installed: 12-28-05

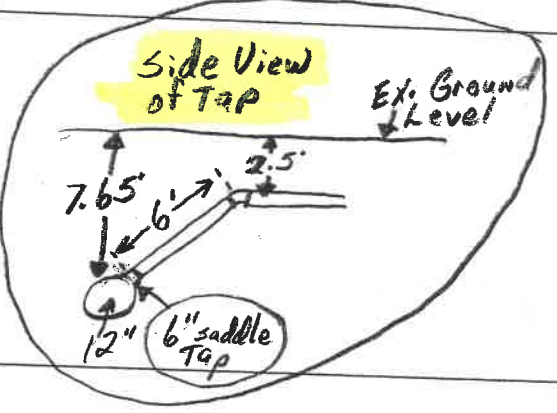
Installed by: Taylor Excavating

Inspected by: Rex Moll



6" saddle Tap
7.65' Deep Top of Pipe

Ex. 12" vit.
49.5'



* NOTE:
 BASE MAP
 SHOWS (2) BLDGS.
 AERIAL CONFIRMS
 ONLY (1) BLDG.
 12/27/06
 MTS

2 each
6" 2 1/2" Bends
20" Deep

6" 4" reducer
FENCE

4" 5/8" pipe

6" 90
18" Deep

6" 45° Bend
2' Deep

16'

20'

6" 45° Bend
2.5' Deep

20'

17'

6'

63'

#548
Res # 548
Beckham St.
Lot # 1

up stream
San. M.H.